

Forestry Team in Action



Yesterday's Forest Professionals – Today's Weed Warriors

SINCE INCEPTION, THE INVASIVE PLANT COUNCIL OF BC (IPCBC) recognized that forest professionals' skills are a great fit for managing invasive plants in our province. As a group, forest professionals have a sound background in ecology and plant biology, enjoy the outdoors, can handle a GPS, map out a site, wield a shovel and care about the environment.

Approximately one third of the IPCBC's full-time staff is currently comprised of forest professionals. They work on a wide range of projects: managing operational weed control; developing and delivering training programs; presenting workshops and speeches; designing industry best practices programs; and facilitating public and professional education initiatives.

The IPCBC's forest professionals are thrilled to be working with various government agencies, non-profit organizations, and industry groups to limit the establishment and spread of alien plants that threaten our province's biodiversity. In fact, invasive plants directly

impact forest resources when they limit natural and artificial regeneration, and increase wildfire intensity and soil erosion.

If you are interested in learning more about invasive plants, how they threaten BC, or how you can help minimize their spread, please visit www.invasiveplantcouncilbc.ca, or call 250-392-1400.

Project Team

Elaine Armagost, RFT; Heather Davis, RPF; Pam Jorgenson, RPF

Contact

Pam Jorgenson, RPF, Invasive Plant Council of BC.

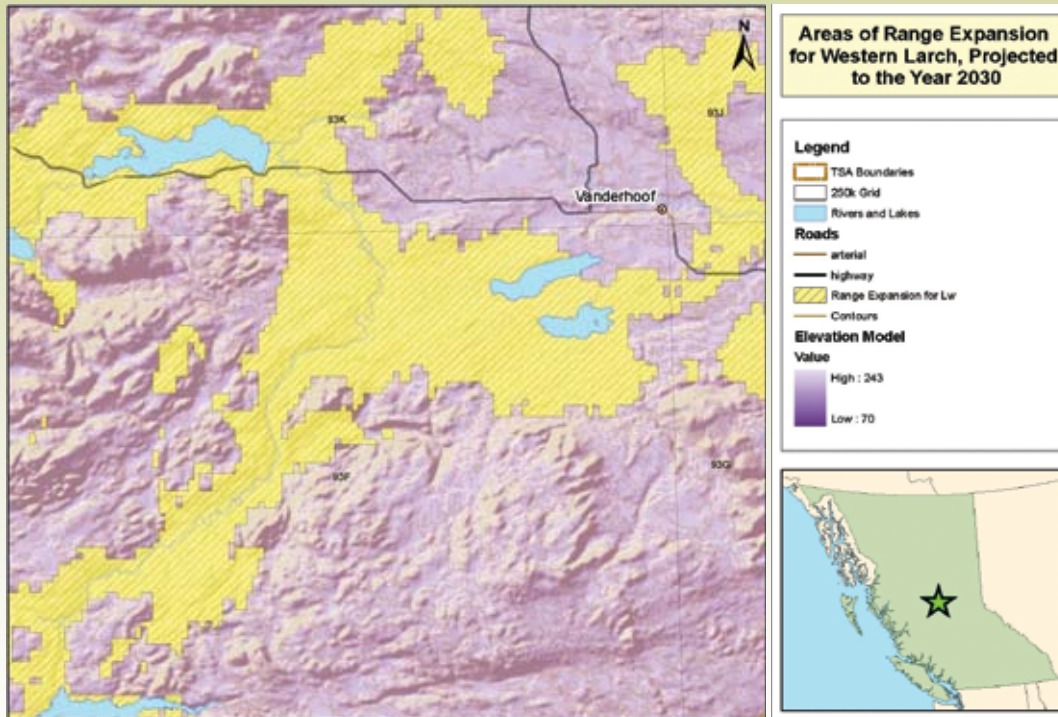
Phone: 250-3923-1400

Email: pjorgenson@invasiveplantcouncilbc.ca

Funding

Community Development Trust, Invasive Alien Species Partnership Program, Ministry of Agriculture and Lands, Ministry of Transportation and Infrastructure, Western Economic Diversification

Forestry Team in Action



Assisted Range Expansion of Western Larch

IN JUNE 2010, AMENDMENTS TO THE CHIEF FORESTER'S STANDARDS for Seed Use were made to provide resource managers and forest practitioners the flexibility, innovation and adaptive capacity to expand western larch beyond its contemporary range across British Columbia.

These amendments, which come into effect on October 3, 2010, are based on recent scientific research (Rehfeldt and Jaquish, 2010) that uses a bioclimate approach to match seed sources with areas projected to be climatically suitable in the future. A policy approach and risk assessment framework, which was further modified based on stakeholder review and input, was also developed by a multi-disciplinary team of forest professionals, researchers and other specialists in the Ministry of Forests and Range."

Climate change adaptation strategies such as these support the BC Climate Action Secretariat's vision to "make adaptation a part of the BC Government's business, ensuring that climate change impacts are considered in planning and decision-making across government."

The latest amendments serve as "interim measures" to be used until the development of a more comprehensive climate-based tree species selection and seed transfer decision support system is completed for all species (over the next five years). The intended

outcome of this policy initiative is to maintain or enhance ecosystem resilience and forest productivity, reduce tree species vulnerability (through increased tree species diversity) and to improve the chances that tomorrow's plantations are well adapted to the future climate.

Research results are published in the journal, *Mitigation and Adaptation Strategies for Global Change*, Gerald E. Rehfeldt and Barry C. Jaquish, March 2010, ISSN 1381-2386, Vol. 15, No. 3, p 283-306.

Organizations Involved

Association of BC Forest Professionals, BC Community Forest Association, Centre for Forest Conservation Genetics, Federation of BC Woodlots, FGC Interior and Seed Transfer Technical Advisory Committees, Forest Genetics Council of British Columbia, FRPA Implementation Team, Ministry of Forests and Range

Project Team

Kevin Astridge, RPF; Lee Charleson, RPF (Co-Lead); John Harkema, RPF; Kathy Hopkins, RPF; Barry Jaquish, RPF; Matt LeRoy, RPF; Shirley Mah, RPF; Leslie McAuley, RFT; Denise McGowan, RPF; Greg O'Neill, RPF; Barrie Phillips (Co-lead)

Contact

Leslie McAuley, RFT, Ministry of Forests and Range

E-mail: Leslie.Mcauley@gov.bc.ca

Websites: <http://www.for.gov.bc.ca/code/cfstandards/> http://www.for.gov.bc.ca/htl/climate_based_seed_transfer/index.htm



Canadian Institute of Forestry
Voice of Forest Practitioners since 1908

The Forestry Chronicle
the national journal for forest practitioners

Our membership includes foresters, forest technicians and technologists, educators, scientists and others with a professional interest in forestry.

Reduced membership fees for ABCFP members

www.cif-ifc.org

Group home insurance

Insurance as simple as **1 · 2 · 3**

1 866 269 1371
 Monday to Friday, 8 a.m. to 8 p.m.

Visit our website at
www.melochemonnex.com/abcfp
 to get a quote or to find out about our National Contest and how you can participate.

TD Insurance
 Meloche Monnex

TD Insurance Meloche Monnex is the trade-name of SECURITY NATIONAL INSURANCE COMPANY who also underwrites the home and auto insurance program. The program is distributed by Meloche Monnex Insurance and Financial Services Inc. in Quebec and by Meloche Monnex Financial Services Inc. in the rest of Canada.

PRO GROUP Sales and Leasing Inc.
"The Way Professionals Buy Cars"

Tel: 604-270-4466
 Fax: 604-270-8355
 Toll Free: 1-888-385-4466

390 Howard Avenue
 Burnaby, B.C.
 V5B 3P8
 Canada

New Car Purchase Plan
 All Makes & Models

member benefit

for members of
 the Association of B.C.
 Forest Professionals

since 1985

Visit Us On-Line:
www.progroupbc.ca

The Regional District of Mount Waddington - Forest Capital 2010 - did an amazing job of celebrating their title last year. In this photo, some of the key players in the team celebrated at the closing ceremony.

The Regional District of Mount Waddington includes Woss, Alert Bay, Sointula, Hyde Creek, Port McNeill, Port Hardy, Port Alice, Coal Harbour, Winter Harbour, Quatsino, Holberg and Kingcome Village.



In Memoriam

It is very important to many members to receive word of the passing of a colleague. Members have the opportunity to publish their memories by sending photos and obituaries to **BC Forest Professional**. The association sends condolences to the family and friends of the following member:

Randall (Randy) Gregory Sulyma

RPF #2824 | 1967 - 2010

Randy Sulyma, MSc, RPF, RPBio, was a project manager and forester/biologist who conducted research and inventory projects throughout northern British Columbia. He passed away at the young age of 43.

Randy's enthusiasm for life was passionately expressed as: husband, dad, coach, ecologist and student. He pursued all aggressively and was determined to improve himself and everything he touched. In doing so, he has enriched the lives of all those who knew him.

During the many conversations we've had while working together away from home, Randy always spoke of recent events with his family (wife Sandra and children Joel and Emily). We traded stories about the philosophical nature of coaching and it was obvious that Randy had a relentless dedication to teaching sport and bringing joy and laughter to not only his own children but to those of other families as well.

Randy's career as an ecologist just kept getting stronger and brighter – and he deserved the opportunity to contribute so much more. He had an insatiable appetite to challenge dogma, investigate the unknown, and dream innovation. This all began as a young forester with the BC Ministry of Forests in Fort St. James (1991-1994, 2006-07) and continued with the BC Ministry of Environment (1995, 2005-06).

Intermittent through this time Randy worked as a consultant with Forest Floor Contracting Ltd. (1994-2004), together with his wife Sandra in their own business Resource Interface Ltd. (2004-2006), and then finally Wildlife Infometrics Inc. (2007-2011). I first met Randy when he was a student studying the ecology of terrestrial lichens (the primary food supply for woodland caribou during winter). Even before he finished his master's degree at the University of Northern BC (2002), Randy's knowledge and genuine interest in the science of ecology led him to participate in habitat supply modeling and recovery planning for woodland caribou populations around north central BC. Thus began an ambitious, accomplished and fruitful part of Randy's career that was focused on adaptive management of terrestrial lichens, vegetation ecology, caribou population biology and habitat supply modeling. His many



technical reports, published papers and adaptive management installations concerning this work represent a legacy that will provide benefit for other biologists and lichenologists to follow.

Randy absolutely loved field work – and was good at it. But he brought an unusual ability to be as adept at office tasks as those in the field. Although uncommon, once one knew Randy, his breadth of abilities was no longer surprising. Randy had such a love for life that he was an accomplished student of anything he put his mind to. This curiosity always led to many deep discussions and debate, always serious, but usually with a note of humour that brought smiles and laughter – and Randy's laughter was infectious.

Randy will be remembered always by his family, friends and colleagues.
Submitted by Scott McNay, RPF, RPBio